



Pinnacle



Serial #: 1UJCJOBV0M1RR0120
 Model: 37MDQS PINNACLE FW

Model Year: 2021 Dealer Name: HARPER CAMPERLAND, INC.
 1200 EAST 10TH
 GREAT BEND, KS 67530
 USA

Manufacturer's Suggested Retail Price \$124,850.00

TOTAL AMOUNT DOES NOT INCLUDE STATE AND LOCAL TAXES OR LICENSE FEES. THE PRICE SHOWN ABOVE MAY OR MAY NOT BE REPRESENTATIVE OF THE ACTUAL SELLING PRICE OF SIMILAR RECREATIONAL VEHICLES IN YOUR AREA.

Standard Equipment

Optional Equipment

THE FOLLOWING ITEMS ARE STANDARD ON THIS MODEL AT NO EXTRA CHARGE

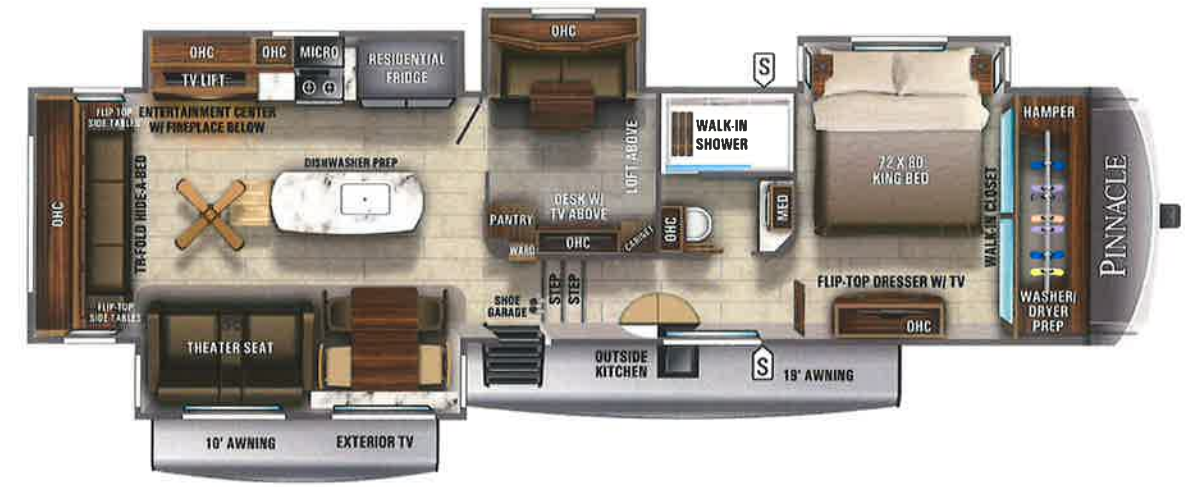
OPTIONAL EQUIPMENT INSTALLED ON THIS VEHICLE BY MANUFACTURER

- EXTERIOR**
- Stronghold VBL™ aluminum framed and vacuum bond laminated gelcoated fiberglass exterior walls (including rear wall and slide room end walls)
 - Magnum Truss™ XL6™ Roof System (strongest tested roof in the industry) with one piece, seamless DiFlex II material
 - Climate Shield™ zero-degree tested weather protection: Fully-enclosed and heated underbelly (ducted), 40,000 BTU output furnace, double layer fiberglass batt insulation in ceiling and floor, double sided radiant barrier insulation (roof and floor), PEX plumbing
 - HELIX Cooling System™ (Industry exclusive): Dual exterior-mounted 15,000 BTU "Whisper Quiet" A/C units, Jayco exclusive insulated dual duct design, directional and closeable A/C vents, larger return air vents with use accessible filters
 - JaySMART™ (Safety Markers And Reverse Travel) LED lighting (patent-pending)
 - Custom automotive-grade vinyl exterior graphics package
 - Skirt metal enclosed drop frame
 - LED exterior lighting package
 - Dual 30 lb. propane bottles with auto regulator
 - Doorside compartment framed and vented for third propane bottle
 - Pass-through storage with Slam-latch™ baggage doors
 - Digital TV antenna with Wi-Fi extender
 - Exterior marine-grade speakers
 - Fully enclosed, LED-lit universal docking center: selectable water connections, quick-connect outside shower, black tank flush, winterization and sanitation, independent satellite and whole coach cable hookups
 - Water heater bypass and battery disconnect
 - Under-mounted spare tire (Goodyear® Endurance® tires- made in the USA)
 - LP quick connect (outside grill prep)
 - Roof ladder
 - Widebody structural steel I-beam construction
- CUSTOMER VALUE PACKAGE (Mandatory)**
- 15,000 BTU "Whisper Quiet" A/C (Living room)
 - 15,000 BTU "Whisper Quiet" A/C (Bedroom)
 - JBL® home entertainment system
 - 10 gal. gas/electric DSI water heater
 - Residential king (72 in. x 80 in.) Serta® mattress with under-bed storage
 - Custom machined aluminum rims
 - LED HDTV with fully digital HDMI® output
 - Keyed-Alike™ lock system (single key for all doors/locks)
 - Rooftop and ground solar prep by Go Power!®
 - Backup and side observation camera prep
 - Hidden hinges on cabinet doors
 - XL grab handle
 - Wireless remote control system (includes Bluetooth® wireless interior controls)
 - Residential 24 in. Insignia™ stove (3.73 cu. ft. with 12V BTU high output burner)
 - Electric patio awning with integrated LED lights
 - Refrigerator temperature sensors linked to JAYCOMMAND®
- 5 STAR HANDLING PACKAGE (Mandatory)**
- Goodyear® Endurance® tires (made in the USA)
 - MORryde® rubber pin box
 - Dexter® axles with Nev-R-Adjust® brakes, E-Z Lube® hubs, & 4,000 lb. leaf springs
 - MORryde® LRE-4000™ rubberized suspension
 - Wet bolt fasteners and bronze bushings

- INTERIOR**
- Solid hardwood fascia
 - Handcrafted hardwood glazed doors, drawers and trim
 - Positive catch, heavy-duty, 75 lb. full extension, steel ball-bearing drawer glides
 - 5/8 in. tongue-and-groove joined plywood floor decking
 - Vinyl flooring (made in the USA) throughout including slide rooms
 - Ceiling fan (select models)
 - LED interior lighting throughout
 - LED accent lighting above slideouts
 - Toe kick night lights in bedroom, bathroom and kitchen
 - Tri-fold hide-a-bed sofa with residential sleep surface (select models)
 - Stainless steel kitchen sink
 - Residential-grade, pull-out kitchen faucet
 - Solid surface lavatory with LED lighting
 - Dual USB charging ports throughout
 - 12V charging station
 - Extra 120V power outlets in kitchen and slide rooms
 - Residential bathroom backsplash
 - LED backlit medicine cabinet with custom framed mirror
 - Porcelain toilet with foot flush
 - Residential quilted bedspread and pillows and gas-strutted under-bed storage
 - C.P.A.P. prepped bedroom
 - Carbon monoxide and LP detector
 - "Shoe garage" in hallway step (select models)
 - Flip-up hidden storage in bedroom chest of drawers (select models)
 - Built in laundry hamper in wardrobe
 - Pull-out countertop extension with 24 in. x 24 in butcher block bar top (select models)
 - Pull-out utility drawer under kitchen sink
 - Cup holders in bedroom nightstands
 - Flip-up table top storage next to tri-fold sofa (select models)
 - Cedar-lined wardrobe
- LUXURY PACKAGE (Mandatory)**
- JAYCOMMAND® "Smart RV" system
 - Drinking Water System™ (patent-pending)
 - 2nd electric patio awning with integrated LED lights
 - Hardwood cabinet stiles
 - Central vacuum system
 - Day/night roller shades in living room
 - 21 cu. ft. residential refrigerator and 1200W pure sine wave inverter
 - Free-standing (no pedestal) table with leaf, (2) free-standing chairs (with under-seat storage) and (2) folding chairs
 - MORryde® StepAbove™ entrance steps (main entrance) with blue LED light
 - Washer/dryer prep & dishwasher prep
 - Convection microwave
 - Residential solid-surface kitchen countertop with solid surface sink covers
 - LED fireplace with 5,000 BTU electric space heater
 - Whole coach water purification system (Includes filter)
 - Powered 50-amp cord reel
 - Cellular prep for antenna and JAYCOMMAND™ "Smart RV" system
 - Tire Pressure Monitoring System (TPMS)
 - High gloss gelcoated sidewalls
 - Oversized multi-battery compartment (industry leading room for 4-6 batteries)
 - Exterior 32 in. LED TV/ interior solid surface buffet
 - Equalizer Systems Hydraulic 6-point auto-leveling system with oversized foot pads
 - Frameless dark tinted safety-glass windows
 - 32 in. bedroom TV
 - Residential walk-in shower with shampoo/soap holder

Base price	100,067.00
Silvermist	n/c
Graphics Package	n/c
USA Standards	n/c
Customer Value Package	4,500.00
Pinnacle Luxury Package	12,450.00
Five Star Handling Package	n/c
Solar Package	593.00
Extreme Weather Package	743.00
3rd AC 15,000 BTU in Living Room	1,193.00
18 Cu. Ft. 2-Way Refrigerator	1,493.00
Generator LP Prep	1,193.00
10 Gal DSI Water Heater	n/c
Pre-Wired Sanicon Dump System	n/c
Backup Camera w/Side Camera	893.00
Tinted Safety Glass	n/c
Windows	n/c
Accessory Receiver Hitch	225.00
Morryde Step Above Steps	n/c
Electronic Drum Brakes	n/c
Laminated Rear Wall	n/c
King Bed	n/c

UNIT TOTAL	123,350.00
DEALER INSTALLED OPTIONS	
<i>Freight</i>	<i>1,500.00</i>
<i>Total w/freight</i>	<i>\$124,850.00</i>



UVW 14879 lbs **Sleeps** 6-8 **Length** 41' 8.38"

DIMENSIONS

Exterior height:.....160.50"
 Exterior width:.....102.00"

WEIGHTS

GVWR:.....16995
 GAWR (front):.....7000
 GAWR (rear):.....7000
 Approx. Gross Cargo Carrying Capacity (GCC):.....2116

TIRES

Tire size (front):.....ST255/85R16E
 Tire size (mid):.....
 Tire size (rear):.....ST255/85R16E
 Tire size (spare):.....ST255/85R16E

CAPACITIES

Fresh water tank (gals.):...75.00
 Gray water tank (gals.):...87.00
 Black water/toilet tank (gals.):...50.00
 Propane (lbs.):...120
 Propane (gals.):...28
 Water heater (gals.):...10.00

SEATING & SLEEPING

King bed:.....72 X 80
 Queen bed (optional):...60 X 80
 Sofa 78" trifold:.....62 X 73
 Euro-bunk optional:.....30 X 80
 Theater seats:.....67
 Free-standing table with 2 chairs & 2 folding:.....standard
 Fixed dinette w/built-in ext.tv:.....option
 Sofa trifold (bunkhouse):.47 X 73
 Loft above bunkhouse:.. x 74

Some dimensions may be rounded and may vary from the actual dimensions
 Weights may be estimated calculations and may vary from the actual weight
 - refer to the vehicle weight labels for actual weights***
 Floorplans, features and specifications are subject to change without notice.

